

# Pedagogical Toolbox

## Printable materials

### Who did what? Science edition – Set of cards

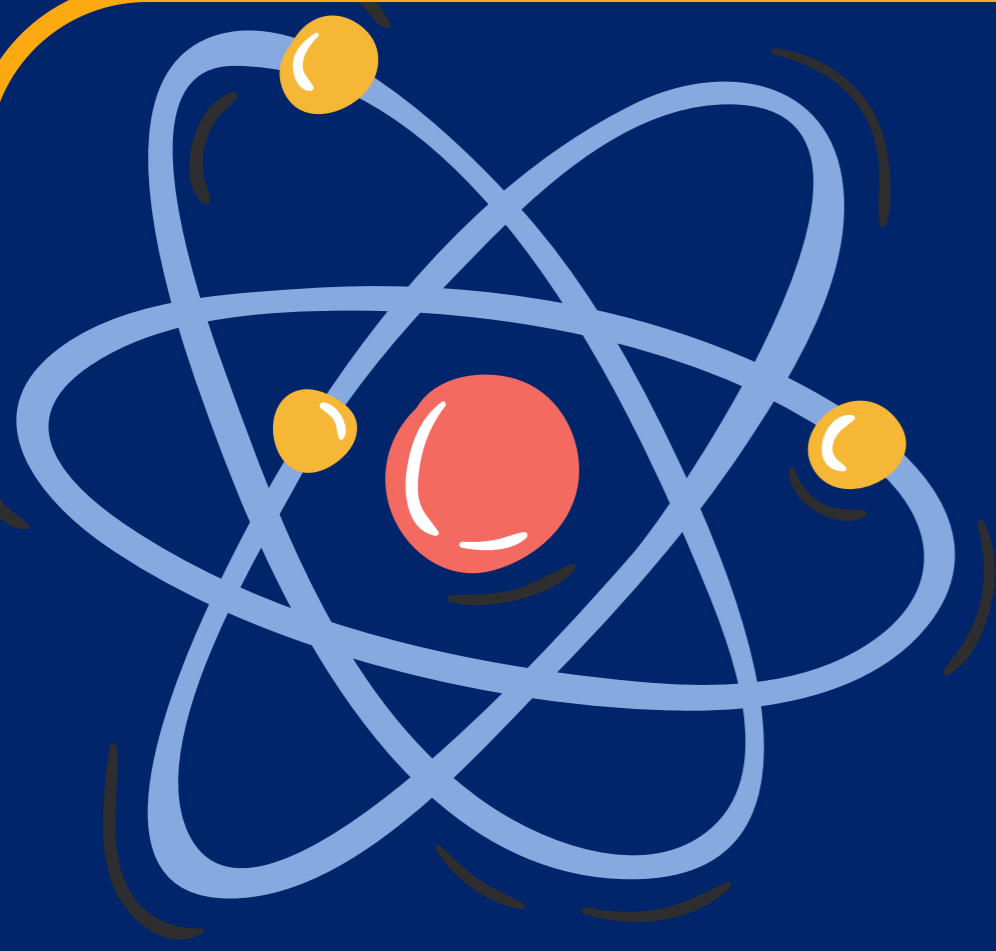
#### Content

The set of cards allows students to explore various scientific topics through 12 famous scientists. Two versions are available depending on how much dark ink you wish to use when printing the cards.

The aim of the game is to find what each scientist has invented or discovered by answering questions related to their topic of expertise. The exercises can be personalised depending on the prior knowledge of your students or which aspects of each topic you wish to explore.

You may create questions so that the answers directly give the name of the theory or invention related to each historical figure or create exercises which give hints or information about the meaning, context, purpose or usage of those discoveries or creations.

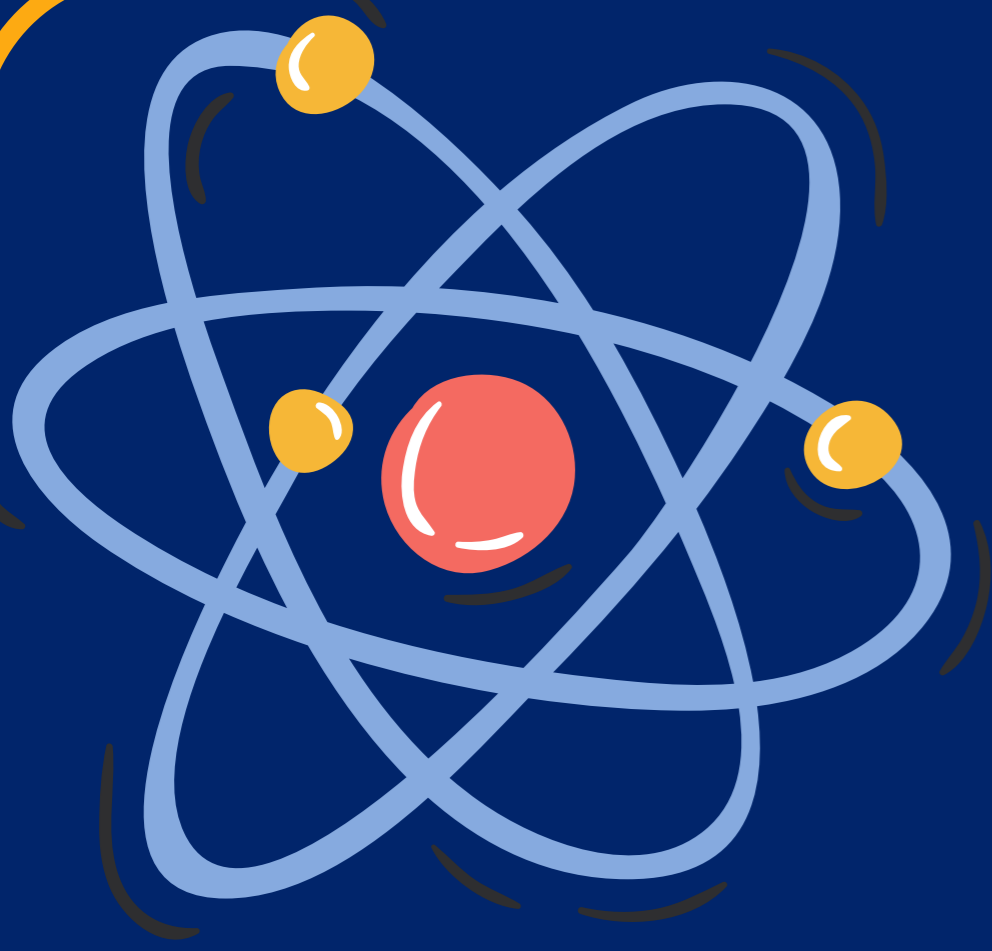
For each correct answer, the player gets 5 points. If they are able to give more information about the scientific topic, they can earn 5 bonus points. The player with the most points at the end of the game, once all questions have been answered, wins the game!



# WHO DID WHAT

SCIENCE EDITION





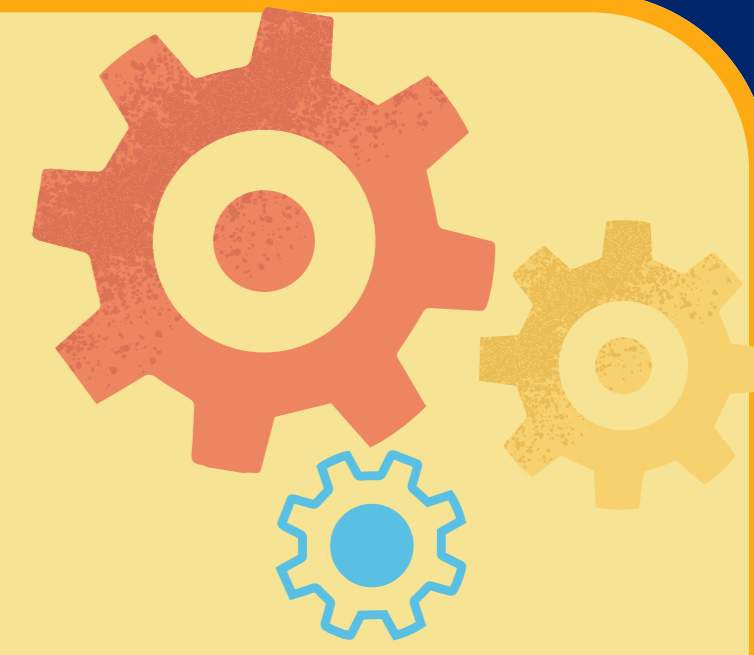
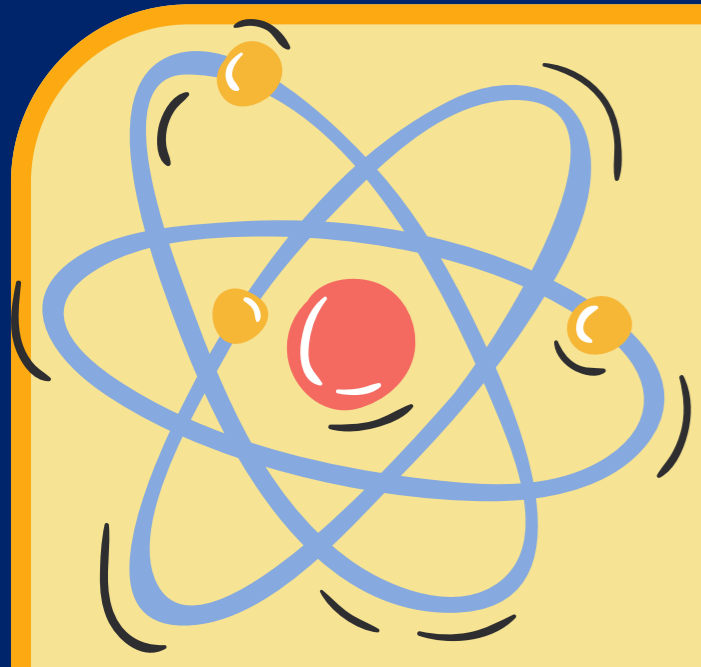
**Find what  
each scientist invented  
or discovered by  
answering the  
questions!**

Each card shows  
a hint at the bottom

**5 points for each correct answer**

**5 bonus points if you can explain  
what the scientists' work is about**



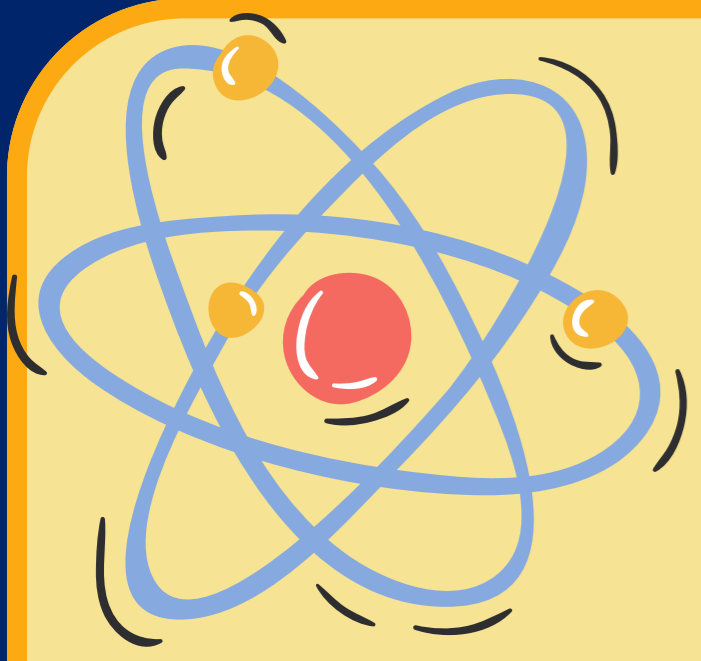


(1642-1727)

**ISAAC NEWTON**

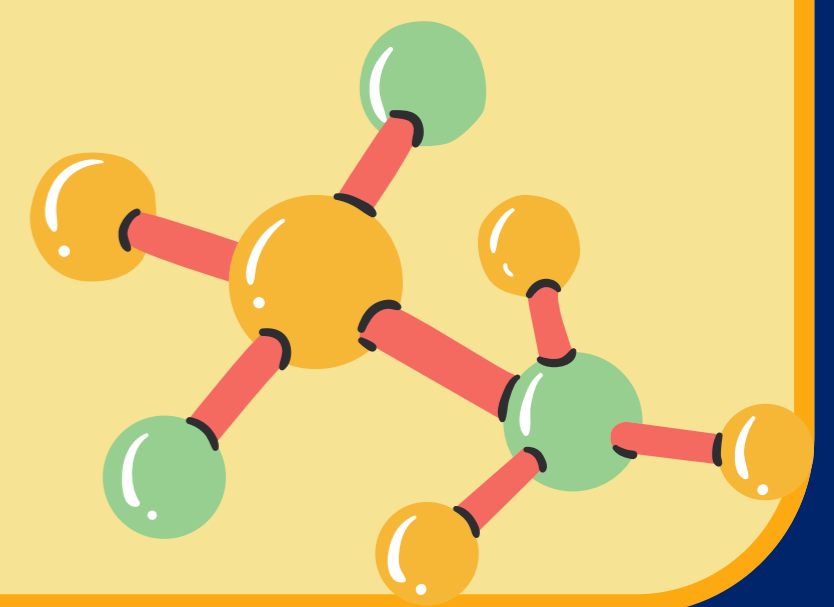


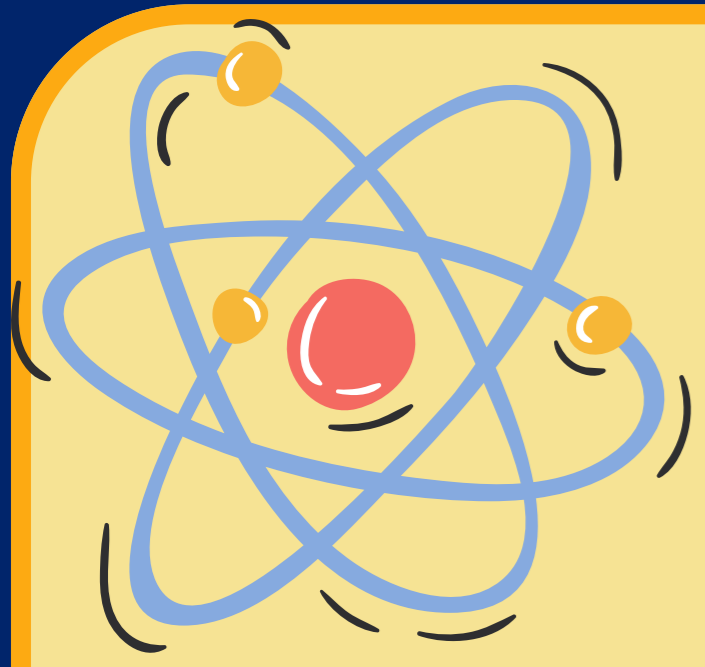




(5 points)  
**CORRECT ANSWER**

**For 5 bonus points,  
can you give more information  
about what Newton discovered?**



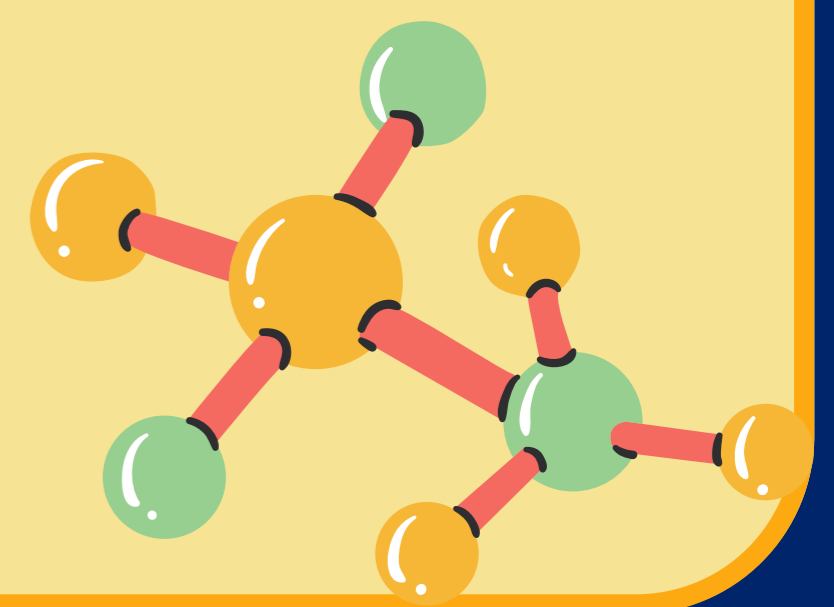


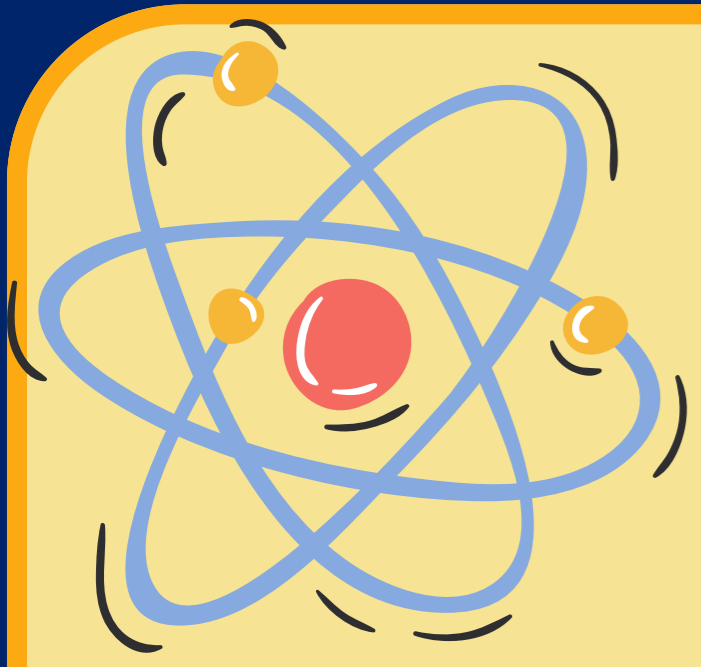
(1879-1955)

**ALBERT EINSTEIN**



$$E=MC^2$$



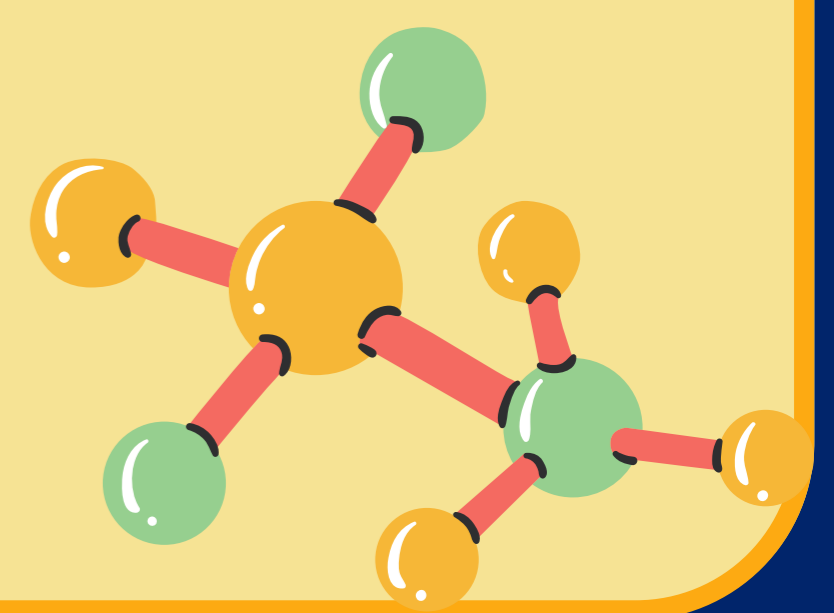


(5 points)  
**CORRECT ANSWER**

**For 5 bonus points,  
can you give more information  
about what Einstein discovered?**



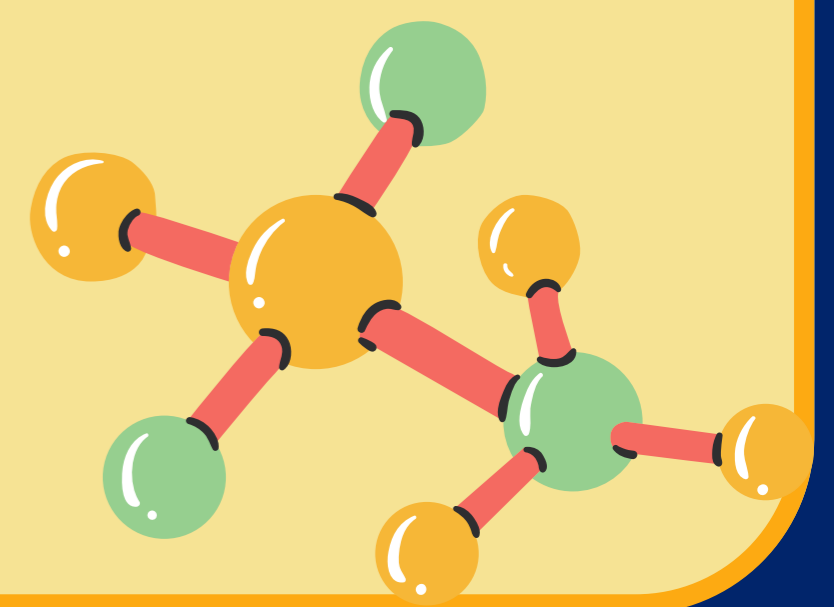
$$E=MC^2$$

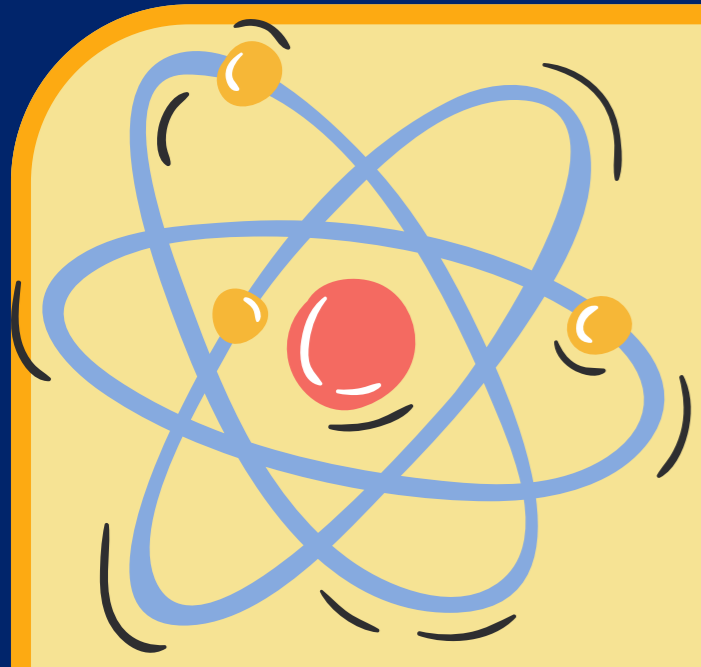




(1867-1934)

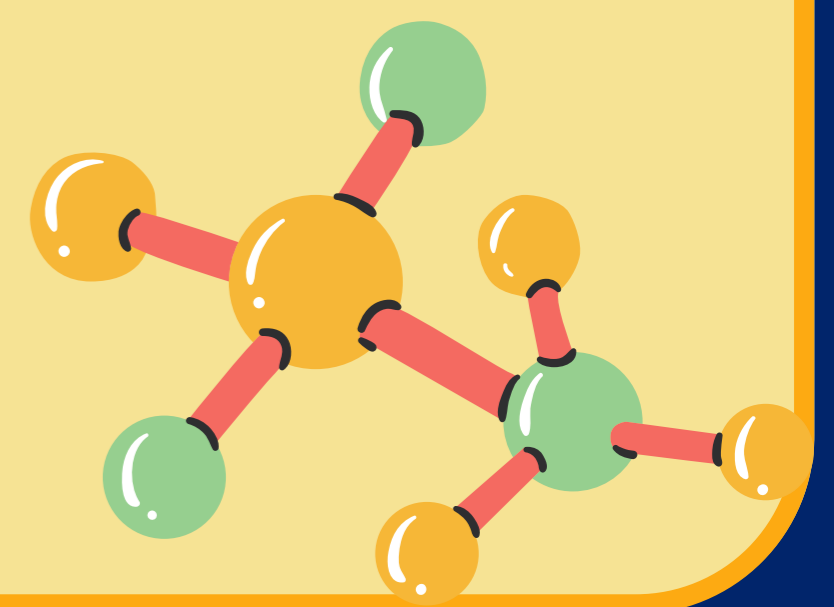
**MARIE CURIE**



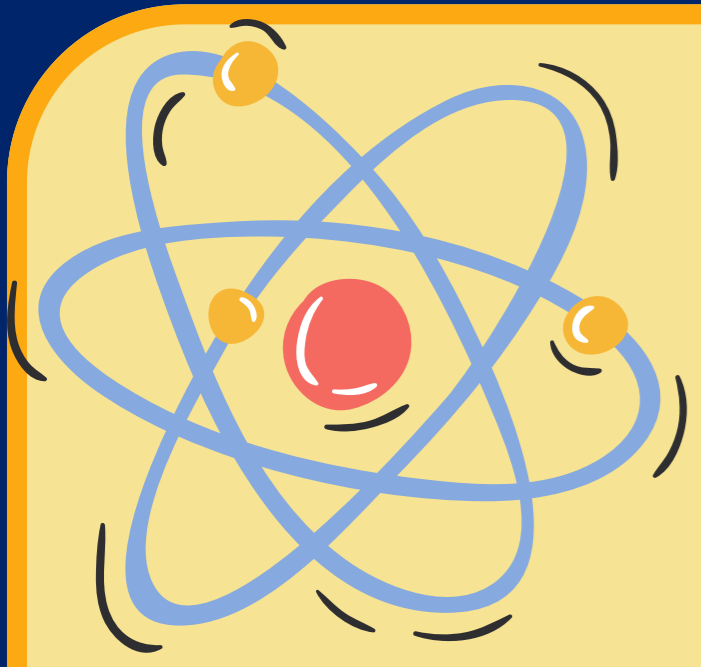


(5 points)  
**CORRECT ANSWER**

**For 5 bonus points,  
can you give more information  
about what Curie discovered?**

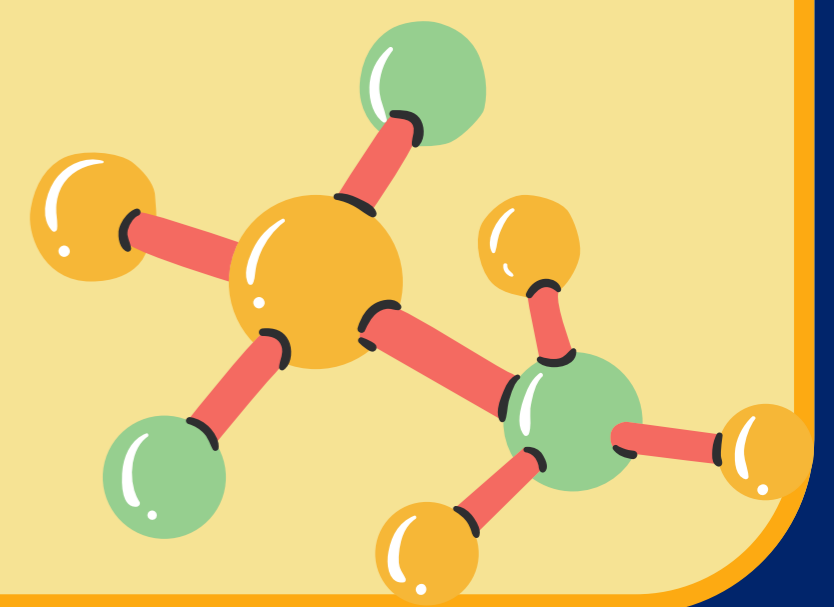
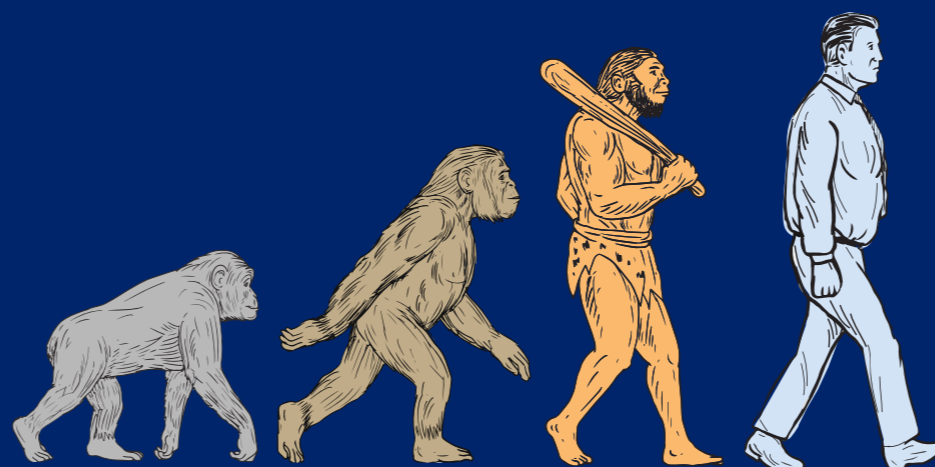


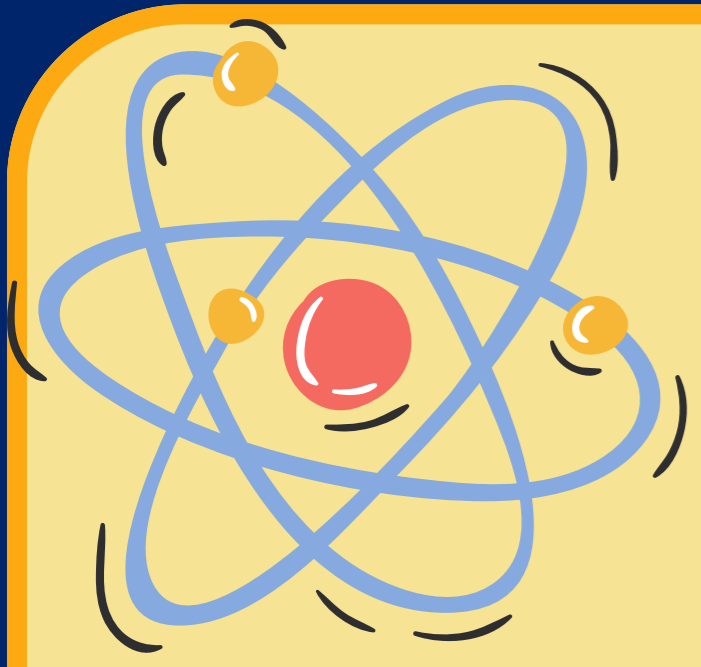




(1809-1882)

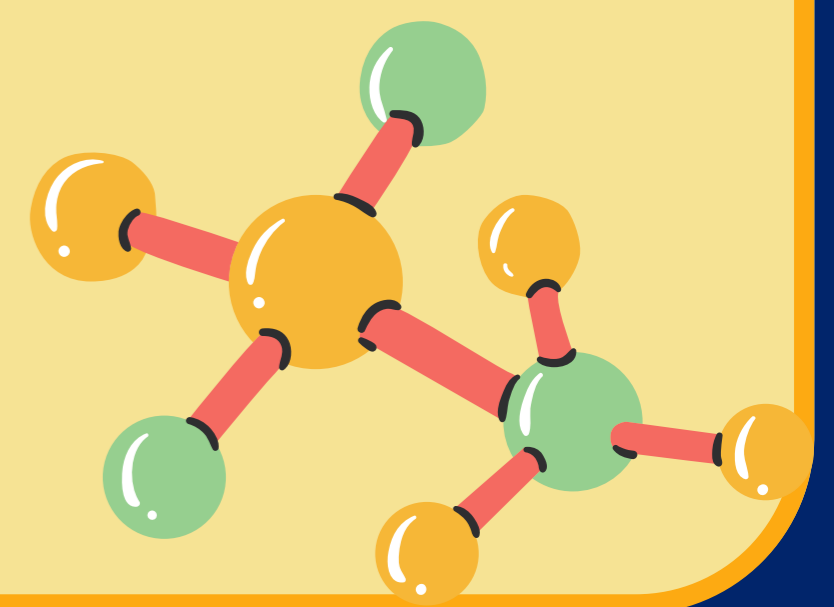
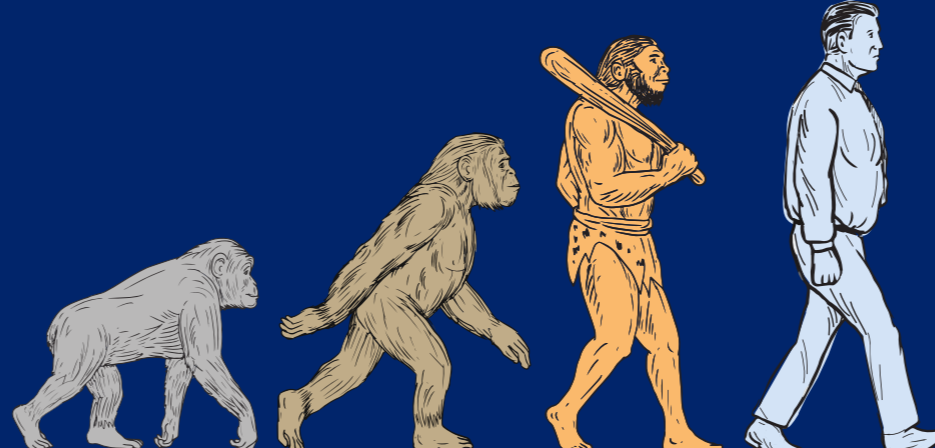
**CHARLES DARWIN**

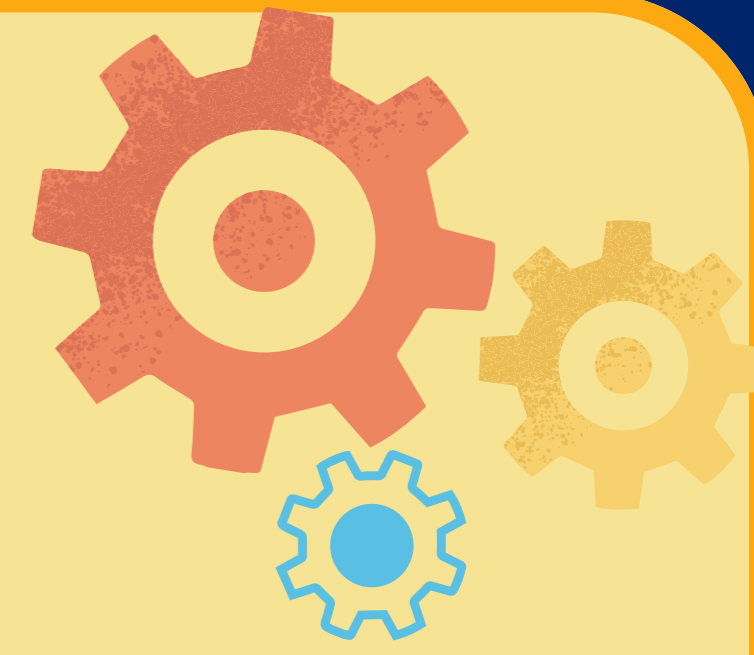
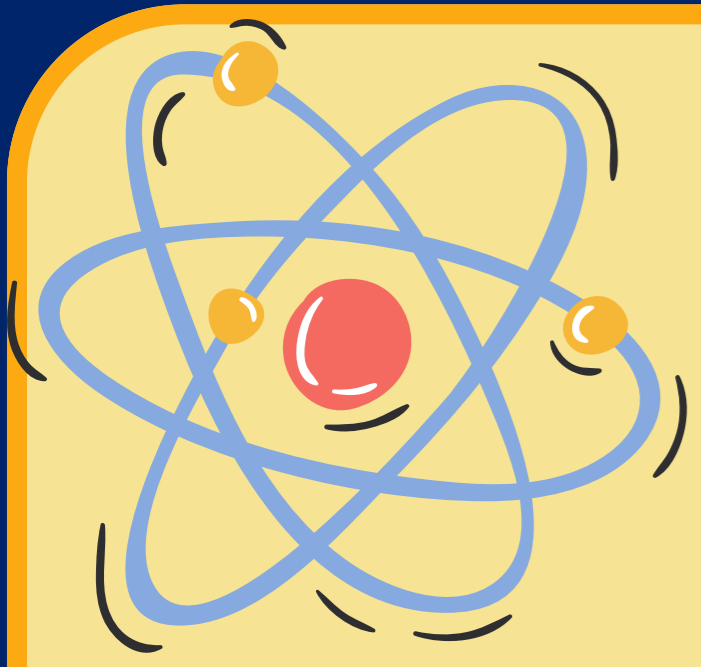




(5 points)  
**CORRECT ANSWER**

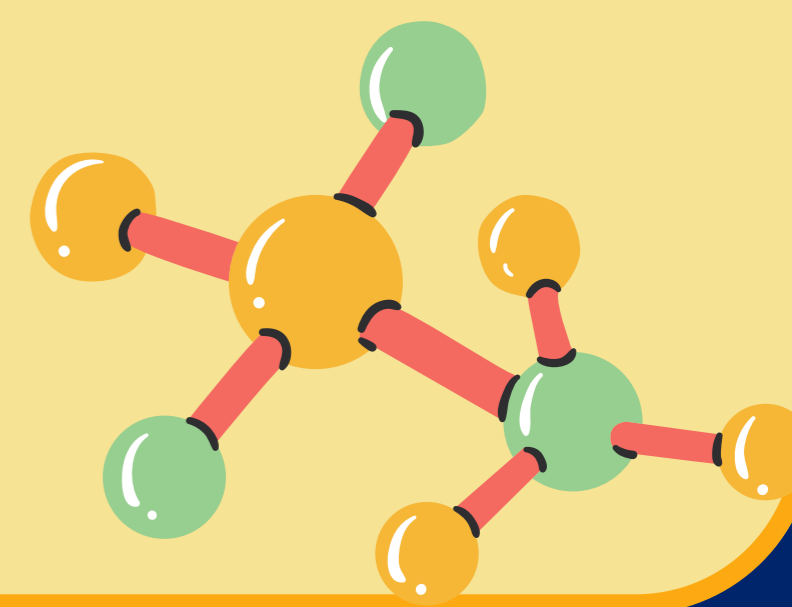
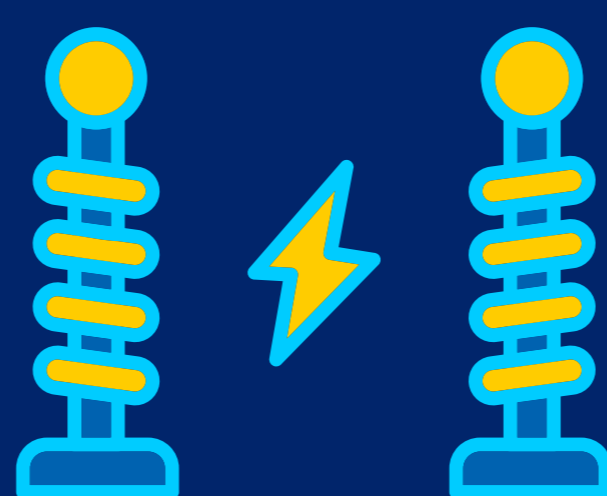
**For 5 bonus points,  
can you give more information  
about what Darwin discovered?**





(1856-1943)

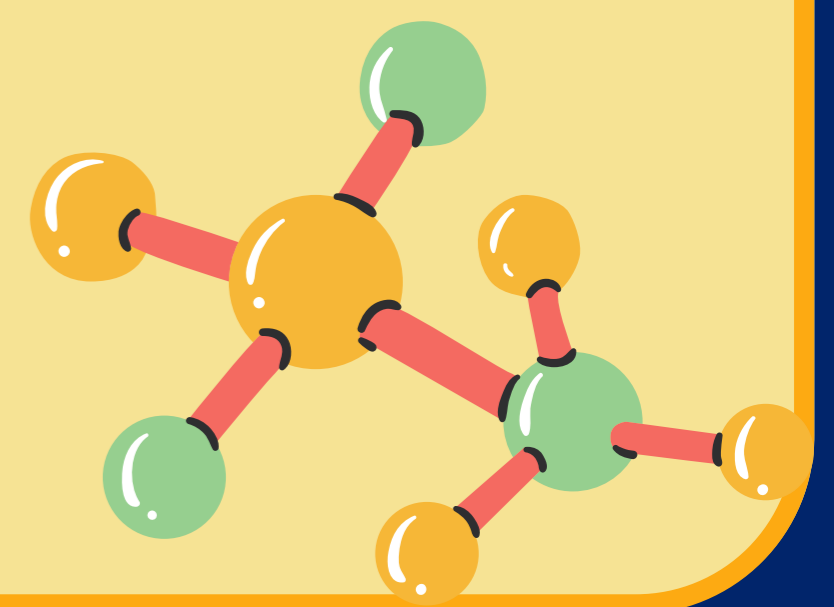
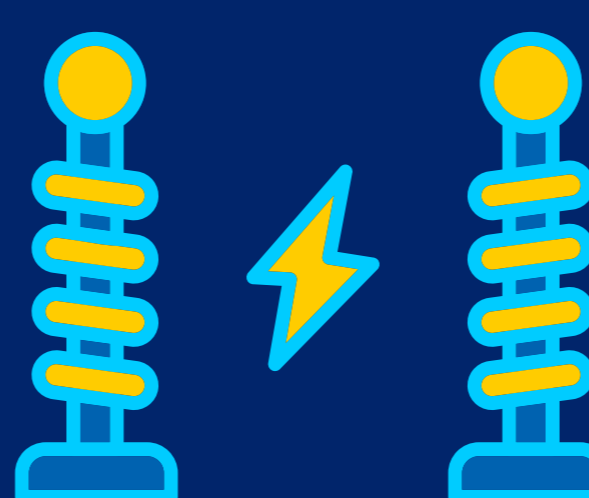
**NIKOLA TESLA**



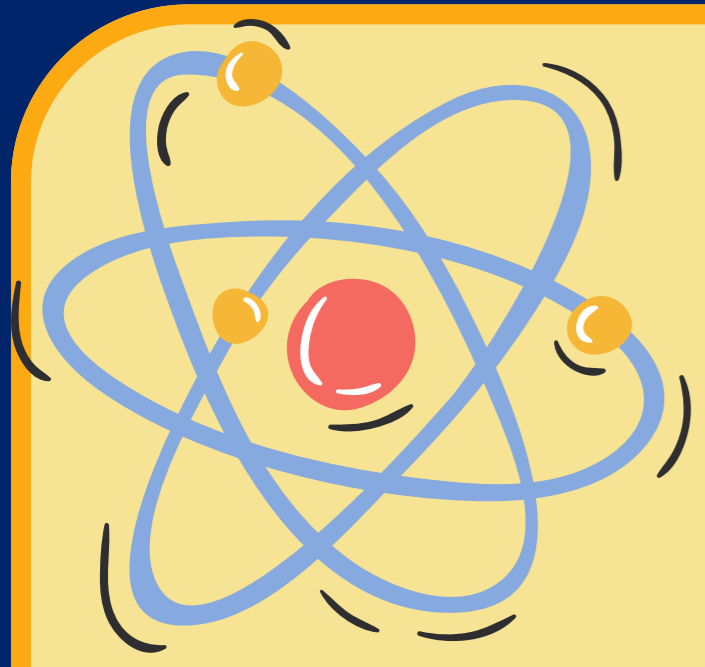


(5 points)  
**CORRECT ANSWER**

**For 5 bonus points,  
can you give more information  
about what Tesla invented?**

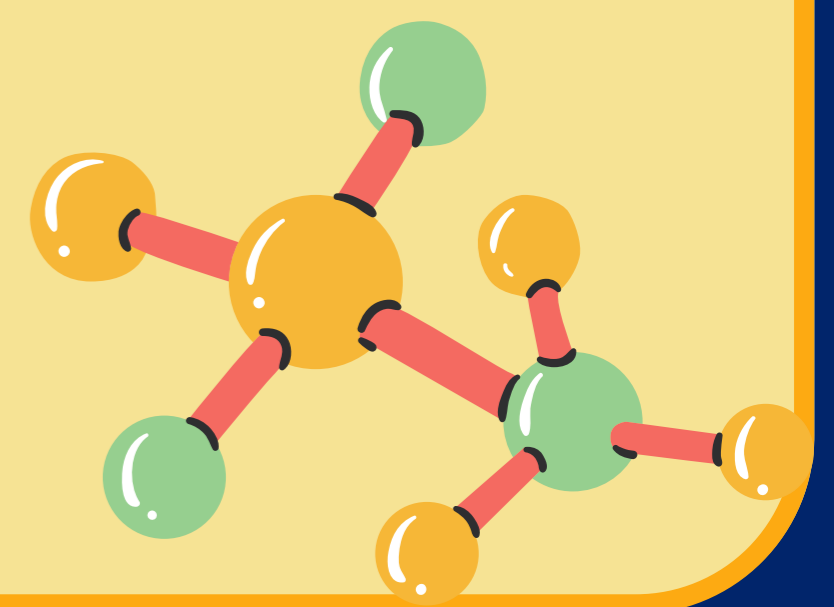




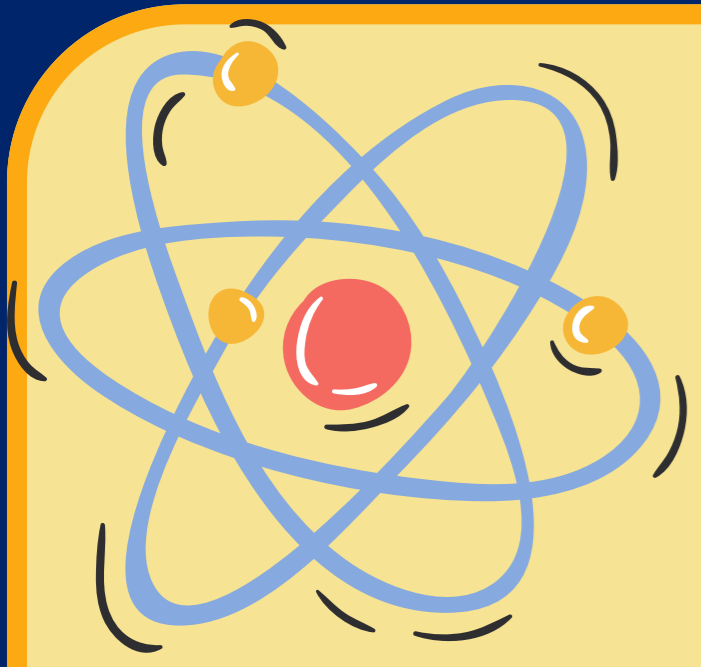


(1564-1642)

**GALILEO GALILEI**

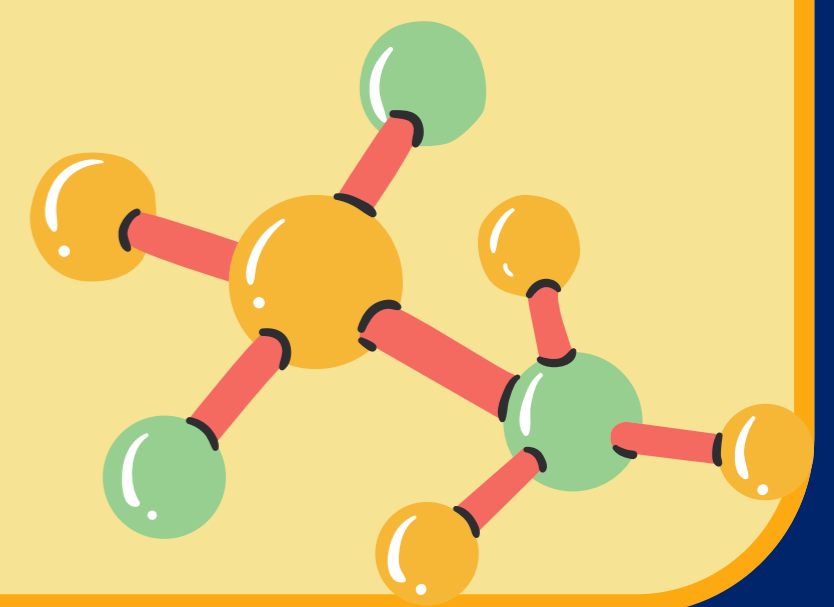


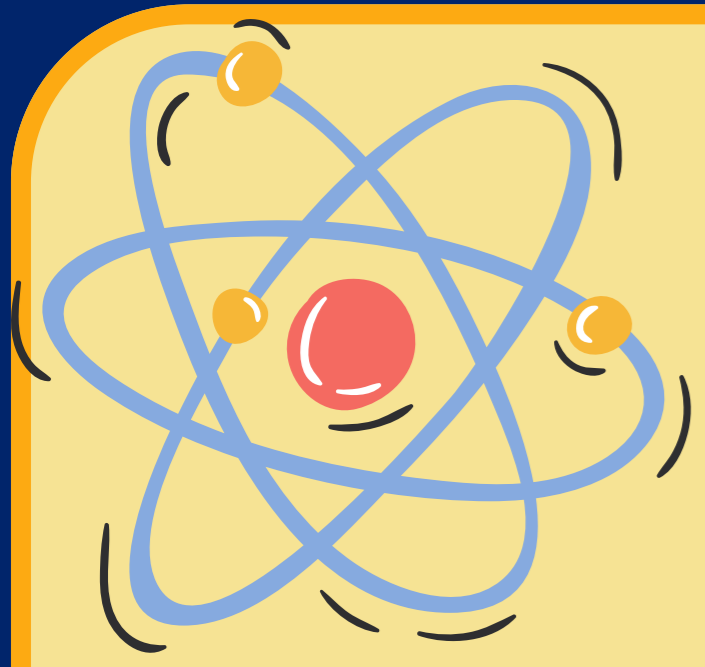




(5 points)  
**CORRECT ANSWER**

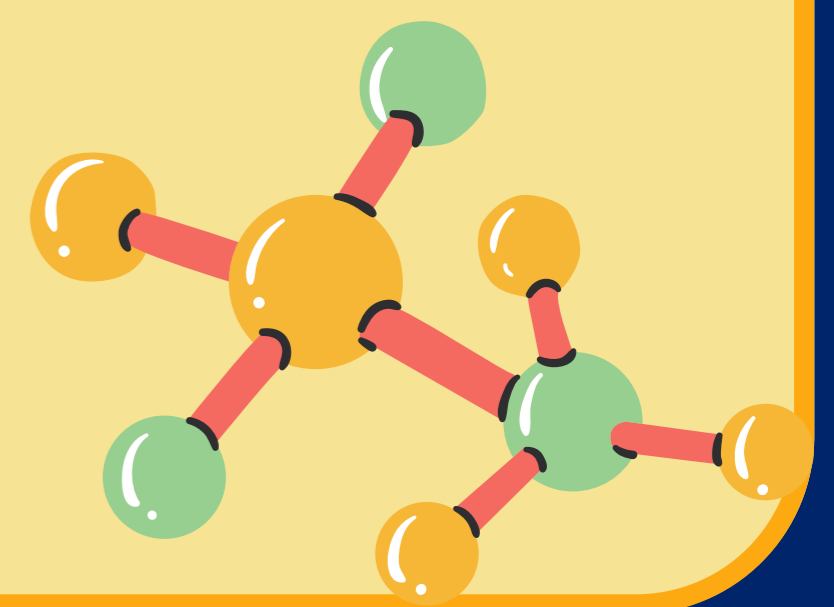
**For 5 bonus points,  
can you give more information  
about what Galileo discovered?**

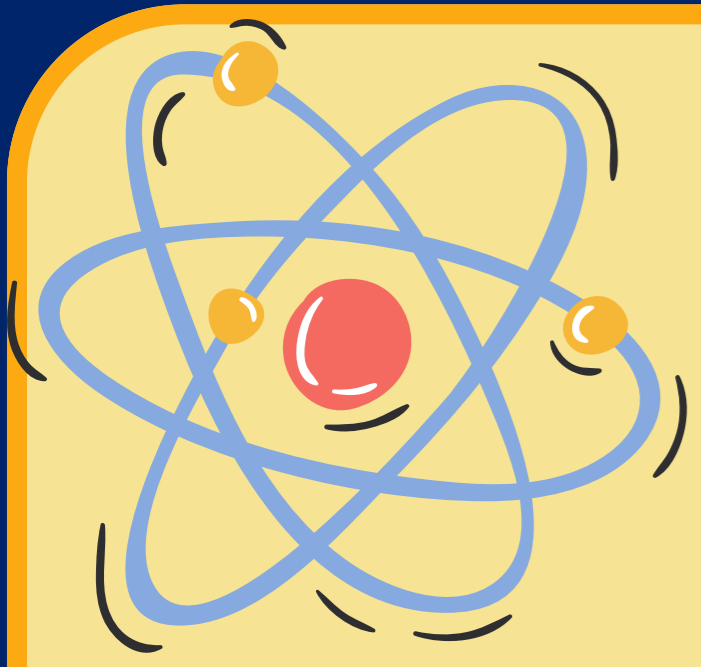




(1815-1852)

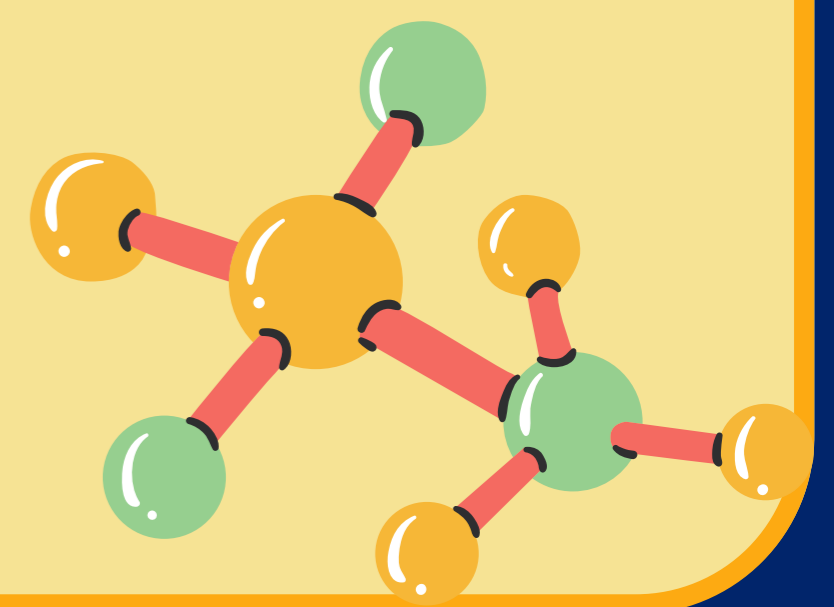
**ADA LOVELACE**





(5 points)  
**CORRECT ANSWER**

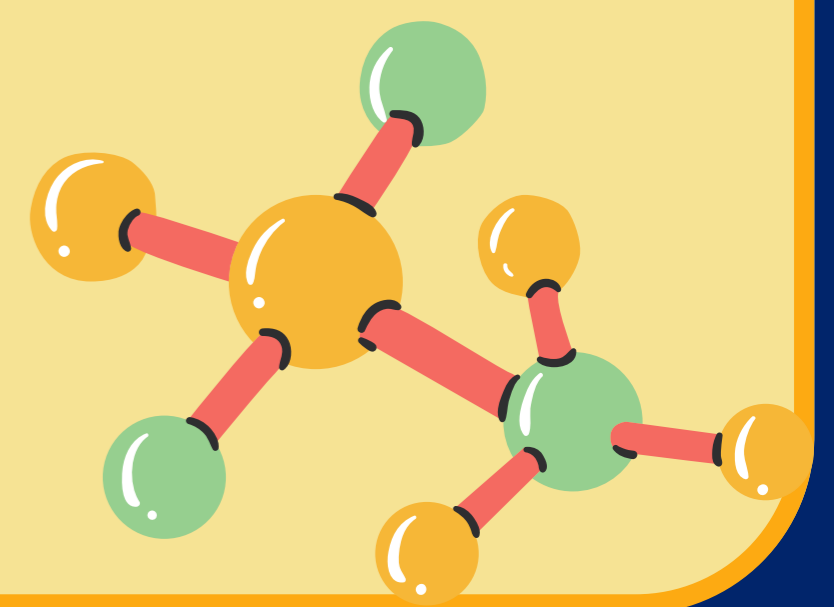
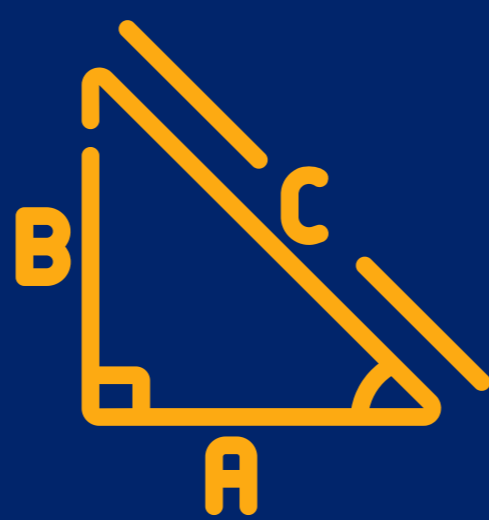
**For 5 bonus points,  
can you give more information  
about what Lovelace invented?**

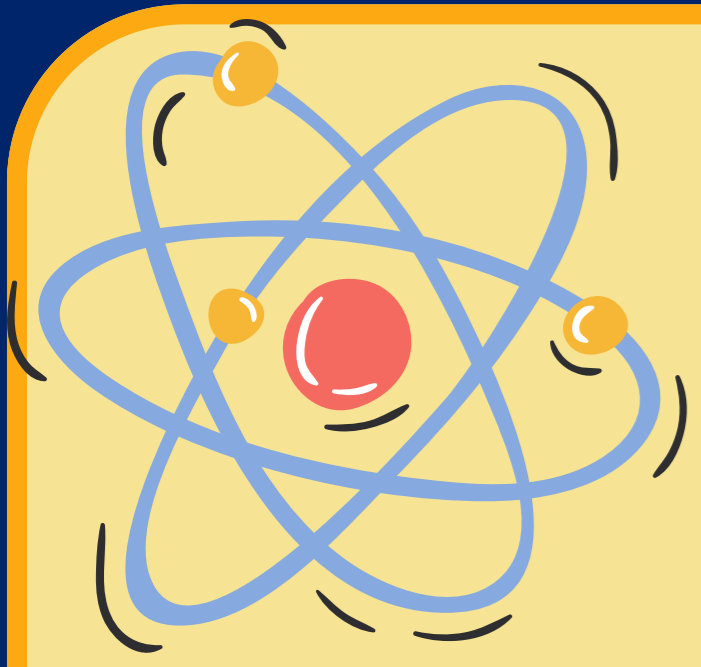




(570-495 BC)

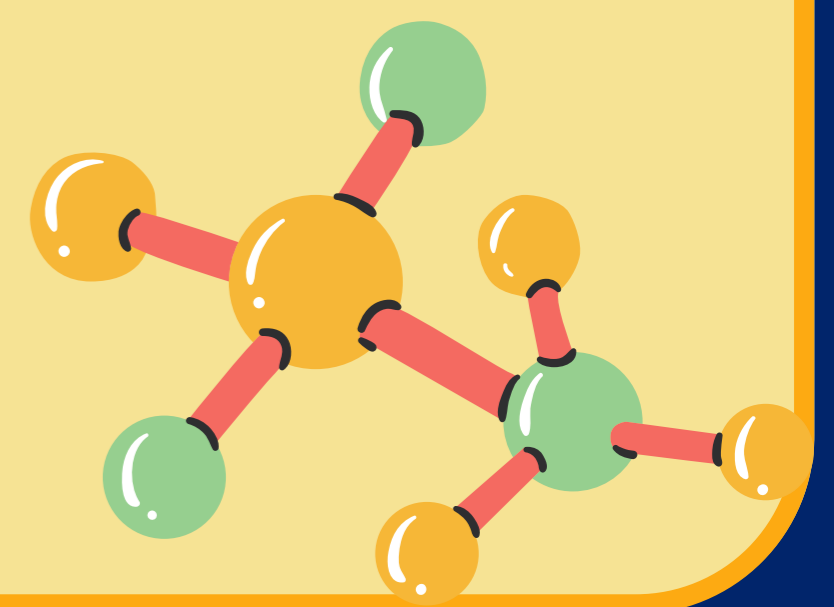
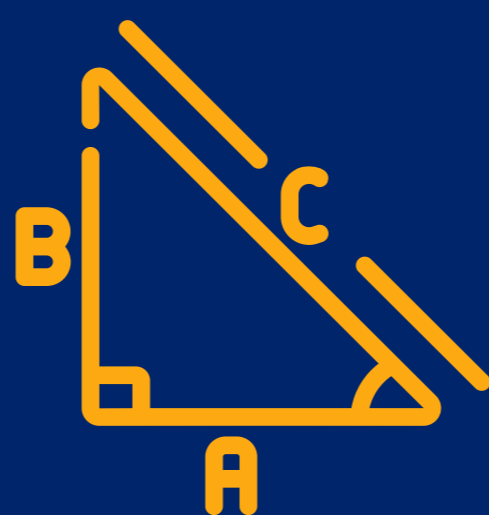
# PYTHAGORAS OF SAMOS



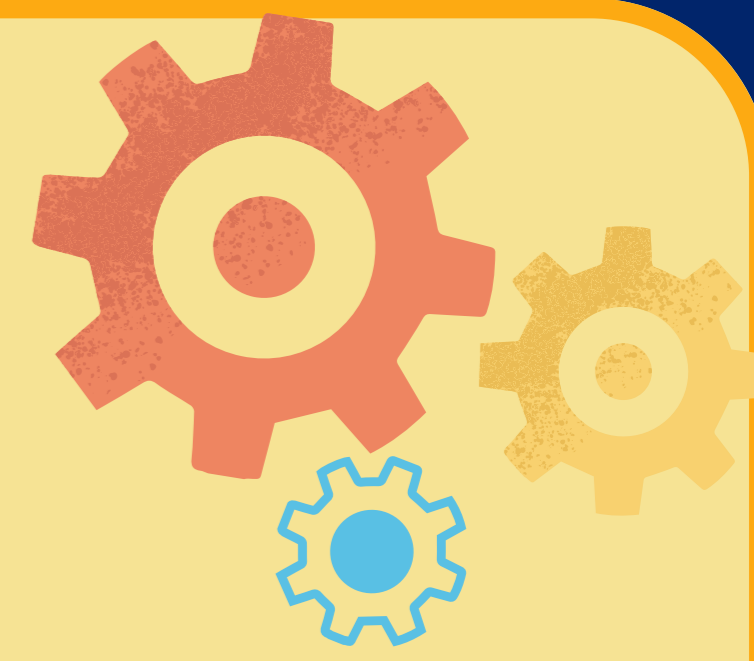
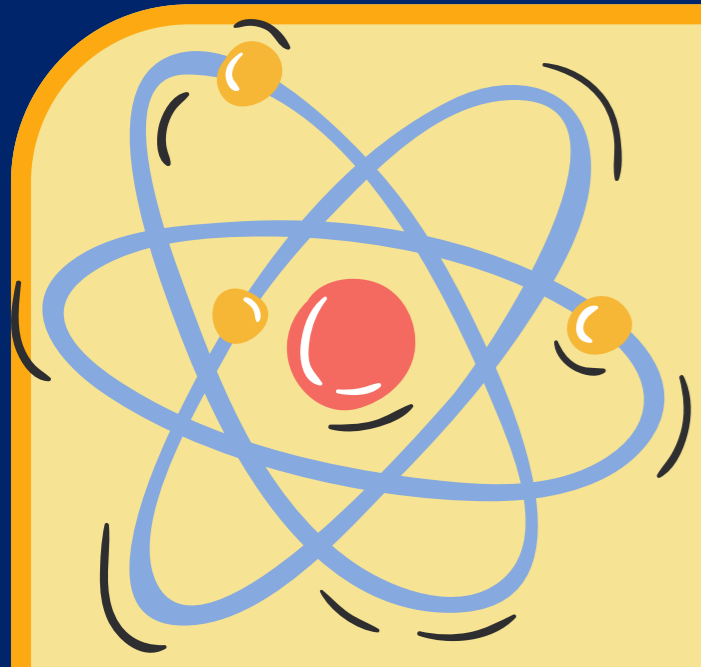


(5 points)  
**CORRECT ANSWER**

**For 5 bonus points,  
can you give more information  
about what Pythagoras discovered?**



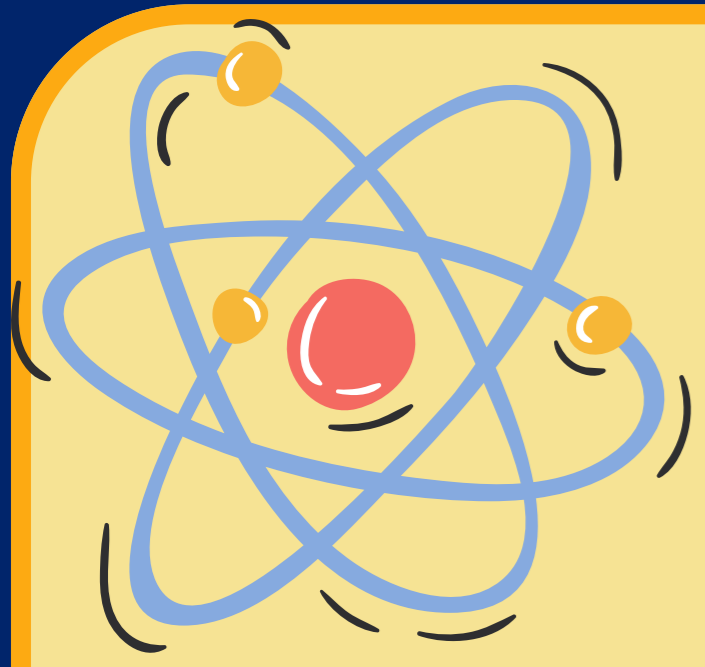




(1920-1958)

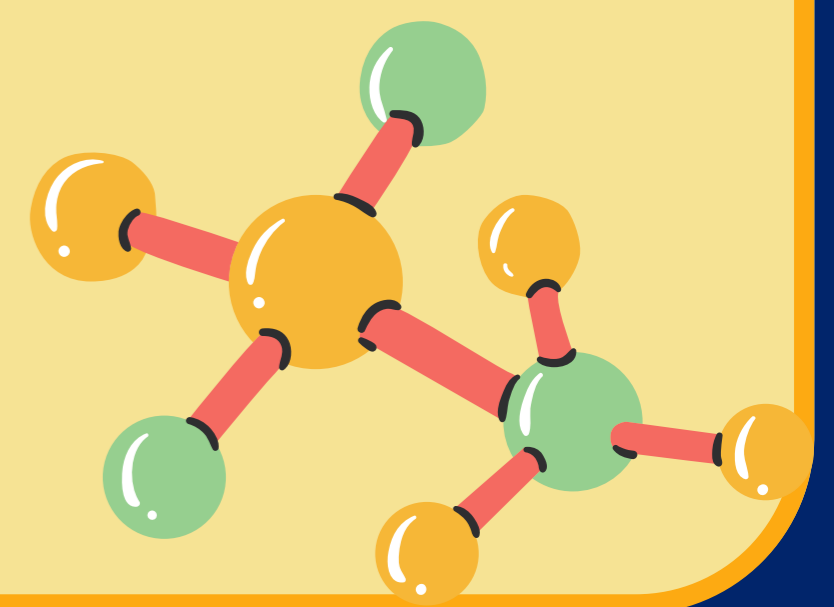
**ROSALIND FRANKLIN**

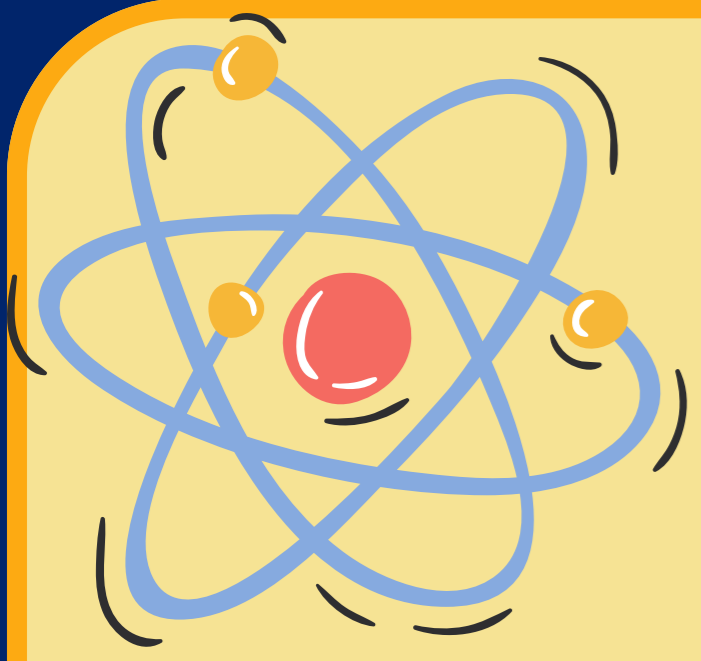




(5 points)  
**CORRECT ANSWER**

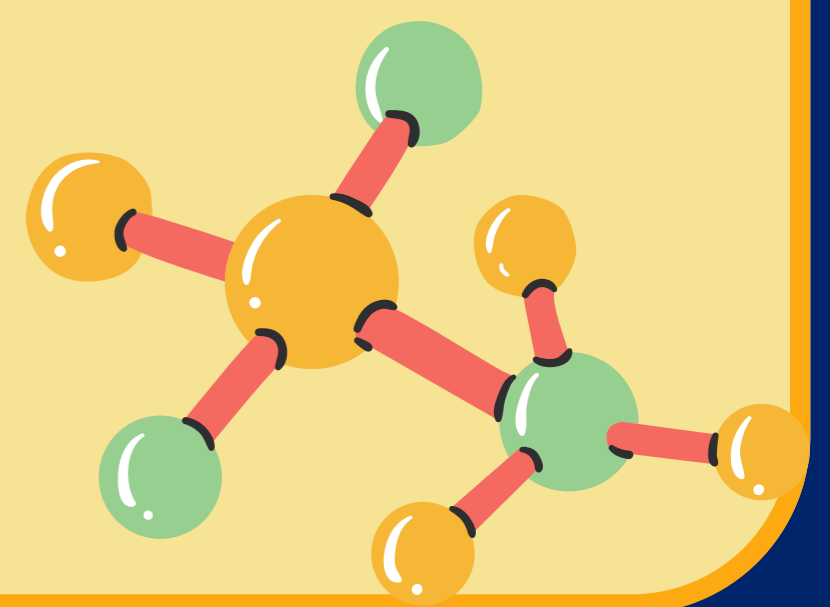
**For 5 bonus points,  
can you give more information  
about what Franklin discovered?**

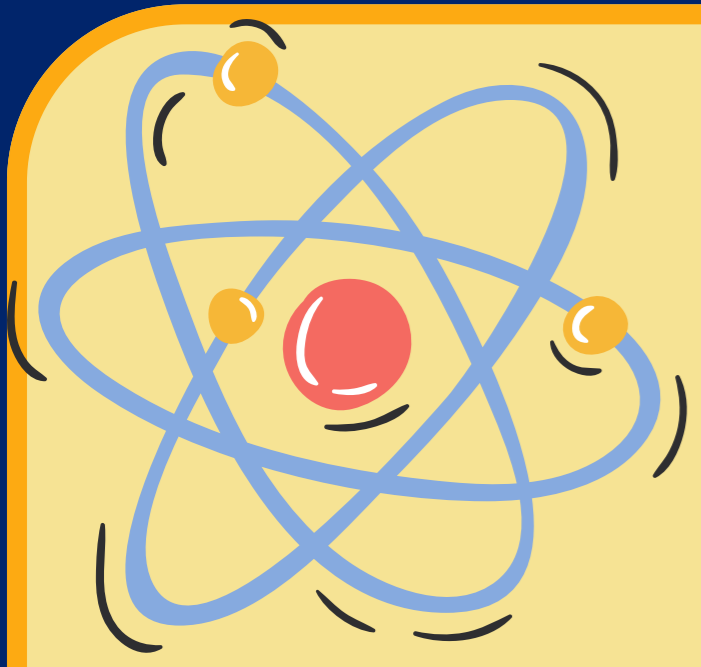




(1822-1895)

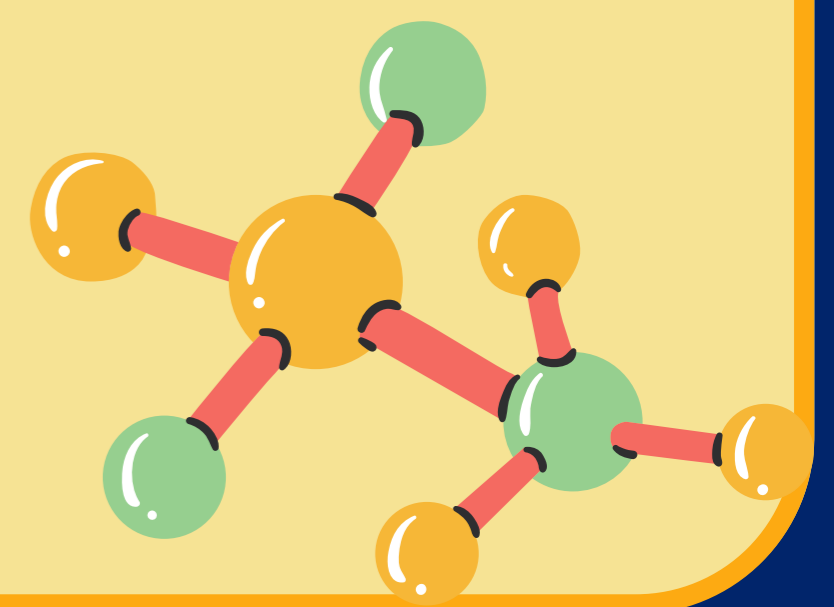
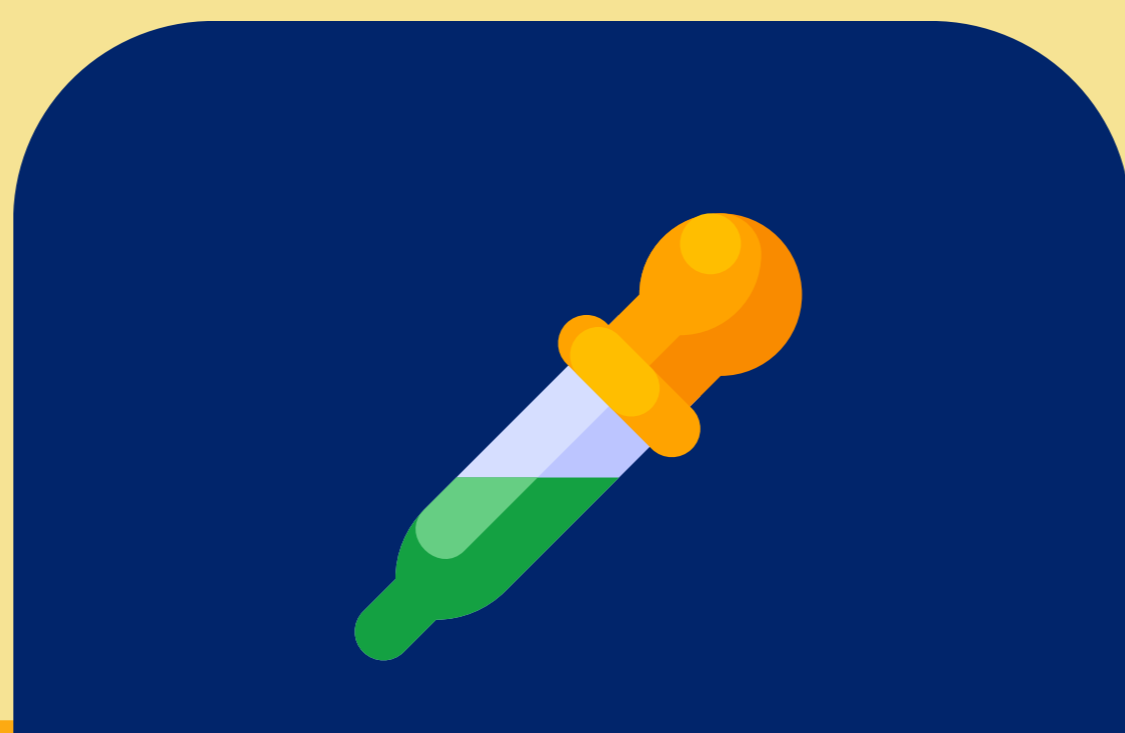
**LOUIS PASTEUR**



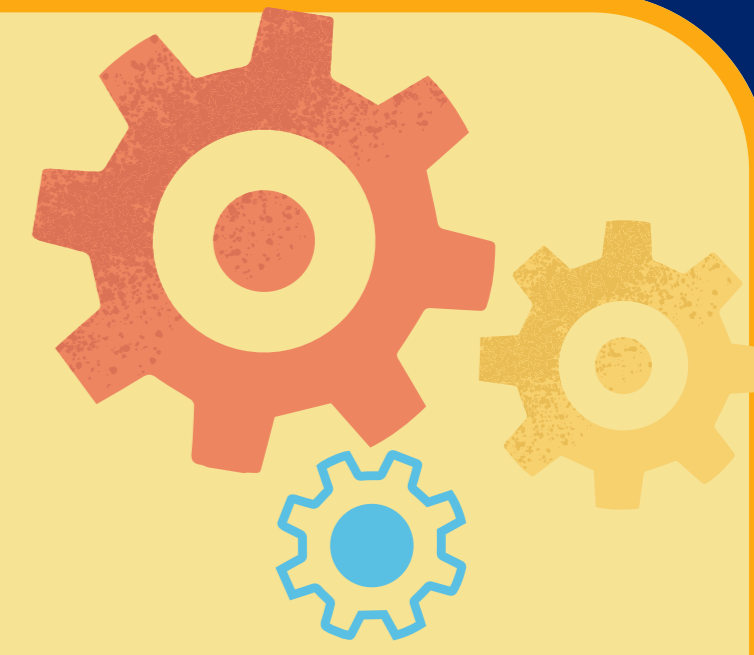
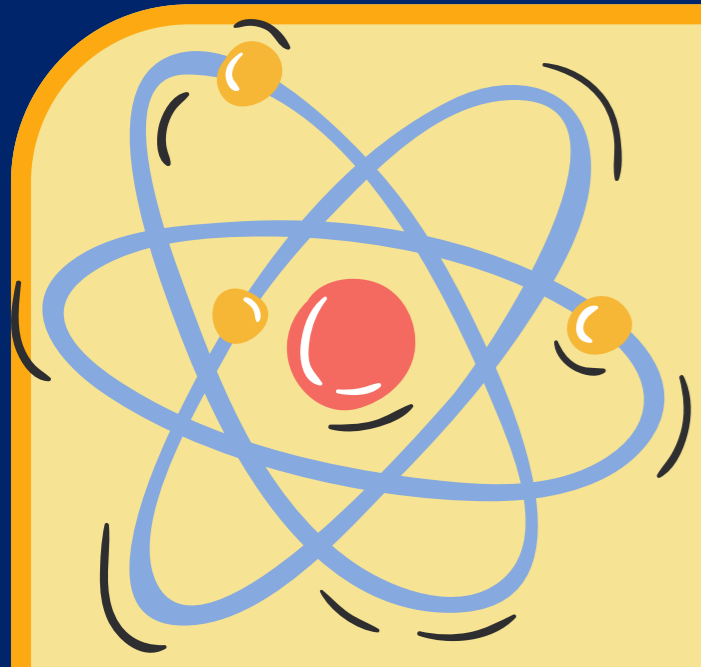


(5 points)  
**CORRECT ANSWER**

**For 5 bonus points,  
can you give more information  
about what Pasteur discovered?**

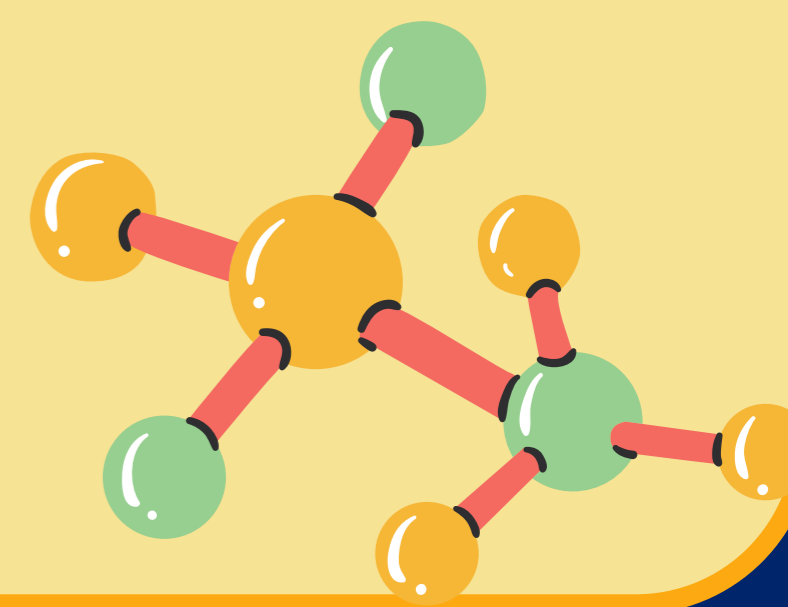




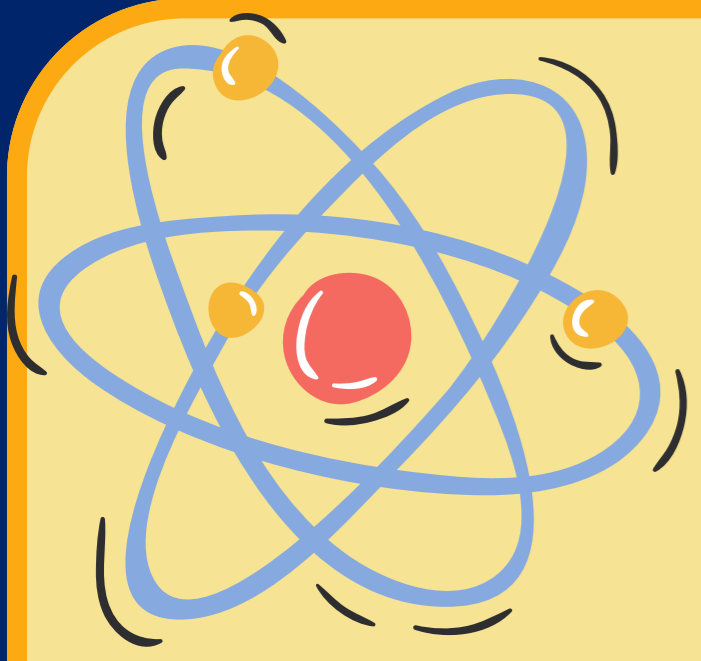


(1847-1931)

**THOMAS EDISON**







(5 points)  
**CORRECT ANSWER**

**For 5 bonus points,  
can you give more information  
about what Edison invented?**

